



MINISTÉRIO DA AGRICULTURA E PESCAS



Food and Agriculture Organization of the United Nations

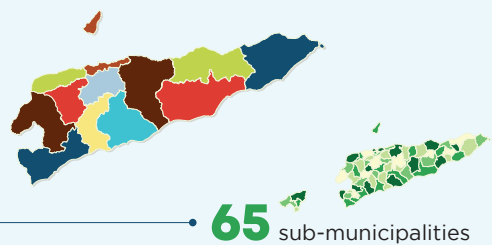
2019 Summary Indicators

TIMOR-LESTE 1st AGRICULTURAL CENSUS HIGHLIGHTS

Household agricultural holdings

Timor-Leste is composed of two administrative units with the smallest unit of administration defined as the *suco*, followed by sub-municipalities. Timor Leste's 452 villages are clustered within 64 sub-municipalities, which are grouped within 13 municipalities.

13 municipalities



65 sub-municipalities

LISTING OF HOUSEHOLDS AND INSTITUTIONS

2 237



Number of enumeration areas (EAs)

1 208 070



Population enumerated

213 417



Number of households listed

141 141



Number of agriculture household holdings listed

597



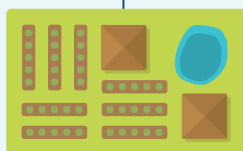
Number of farm institutions listed

AGRICULTURAL HOLDINGS AND LAND TENURE



141 141

Households listed with agricultural holdings¹

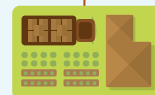


216 180 ha.
Area of all household agricultural holdings including homesteads



597

Institutional holdings² listed



3 070 ha.
Area of institutional farm holdings



66%

Households with agricultural holdings to total households listed



90%

Households engaged in growing of crops on agricultural lands to total households with agricultural activities

¹ Defined as an economic unit under single management with one of the following: a minimum of 200 m² (0.02 ha) of land used for agricultural production; a minimum of two large livestock; a minimum of three small livestock; or a minimum of 10 poultry.

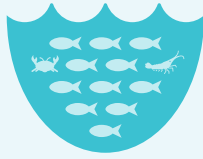
² Defined as agricultural entities operated by a corporation, a religious/non-profit institution (e.g. church, trust), cooperative/community or a government institution engaged in farming.

AGRICULTURAL HOLDINGS AND LAND TENURE (CONTINUED)



3 632

Number of households engaged only in fishing

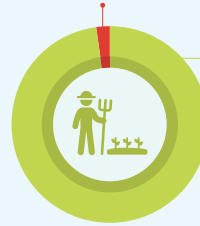


2 069

Number of households engaged only in aquaculture

2%

Number of joint household agriculture holdings



98%

Number of individual household agriculture holdings

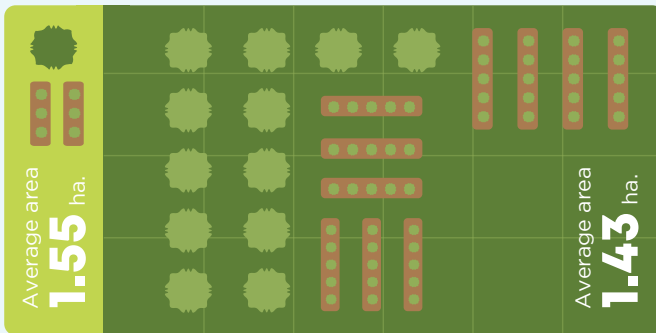
Percentage of household agriculture holdings operated by males and females

Females

15%

Males

85%

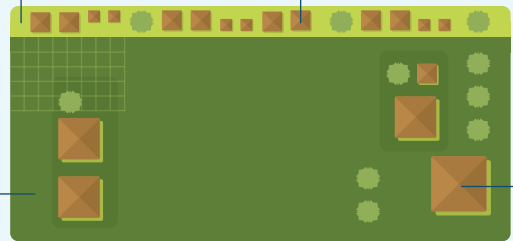


1.53 ha. is the average area of household agricultural holdings in Timor Leste

Holdings of less than 1 ha. account for...

8% of area occupied by household agricultural holdings

66% of household agricultural holdings



Holdings of 10 ha. or more account for...

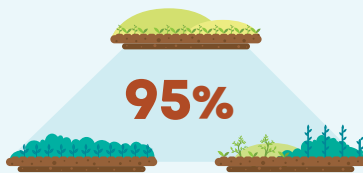
52% of area occupied by household agricultural holdings

2% of household agricultural holdings



1.5

Average number of parcels per household agricultural holding



95%

Percentage of household agricultural holdings with 1 to 3 parcels



1.01 ha.

Average area per parcel of household agricultural holding

70% Household agricultural holdings on which temporary crops are grown



45%

Household agricultural holdings on which permanent crops are grown

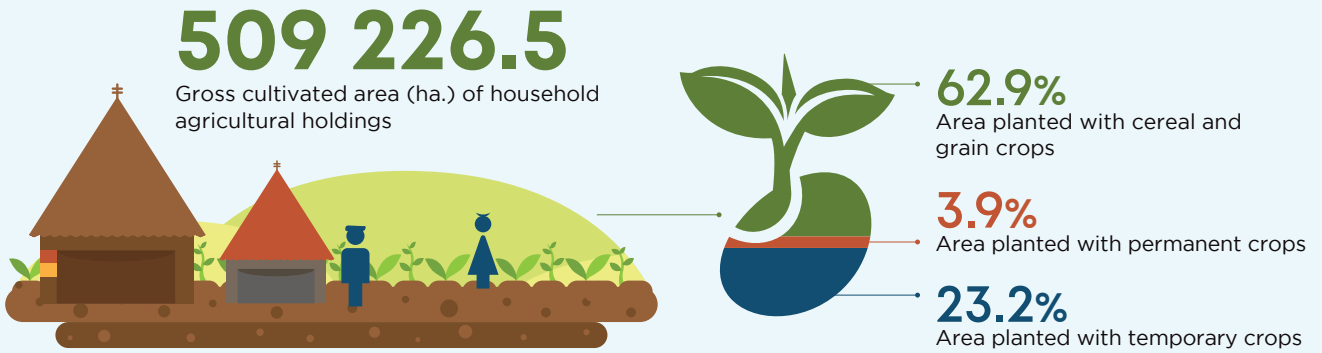
96%

Parcels of agricultural household holdings owned

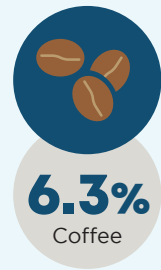
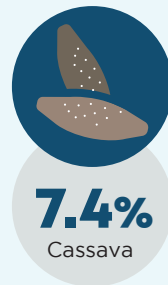
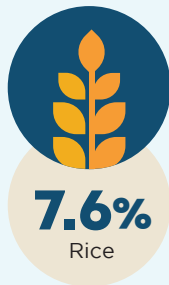
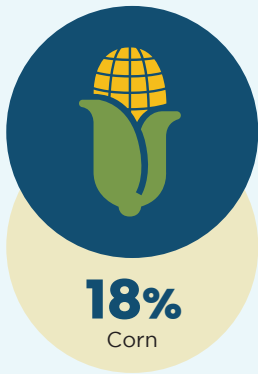
(with Portuguese, or Indonesian certification, or with other *numero referencia* or certificate, or owned without certification)



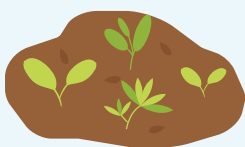
CROP CULTIVATION



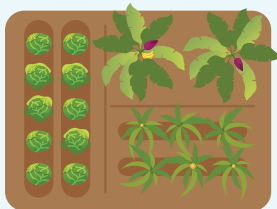
Percentage of area (gross) planted with crops from the total cultivated area of household agricultural holdings



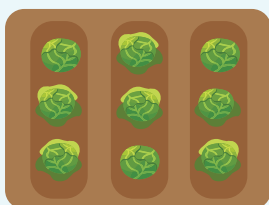
Area (gross) under systems of planting/cropping from the total cultivated area of household agricultural holdings



66.4%
Scatter cropping



46.2%
Mixed cropping



14.5%
Monoculture

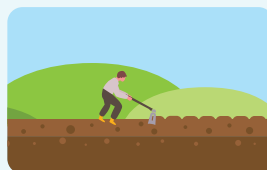
Percentage of households reporting cultivation who tilled their land



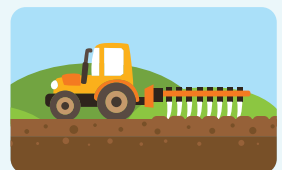
51%
of households did not till their land



67%
of households used conventional tillage

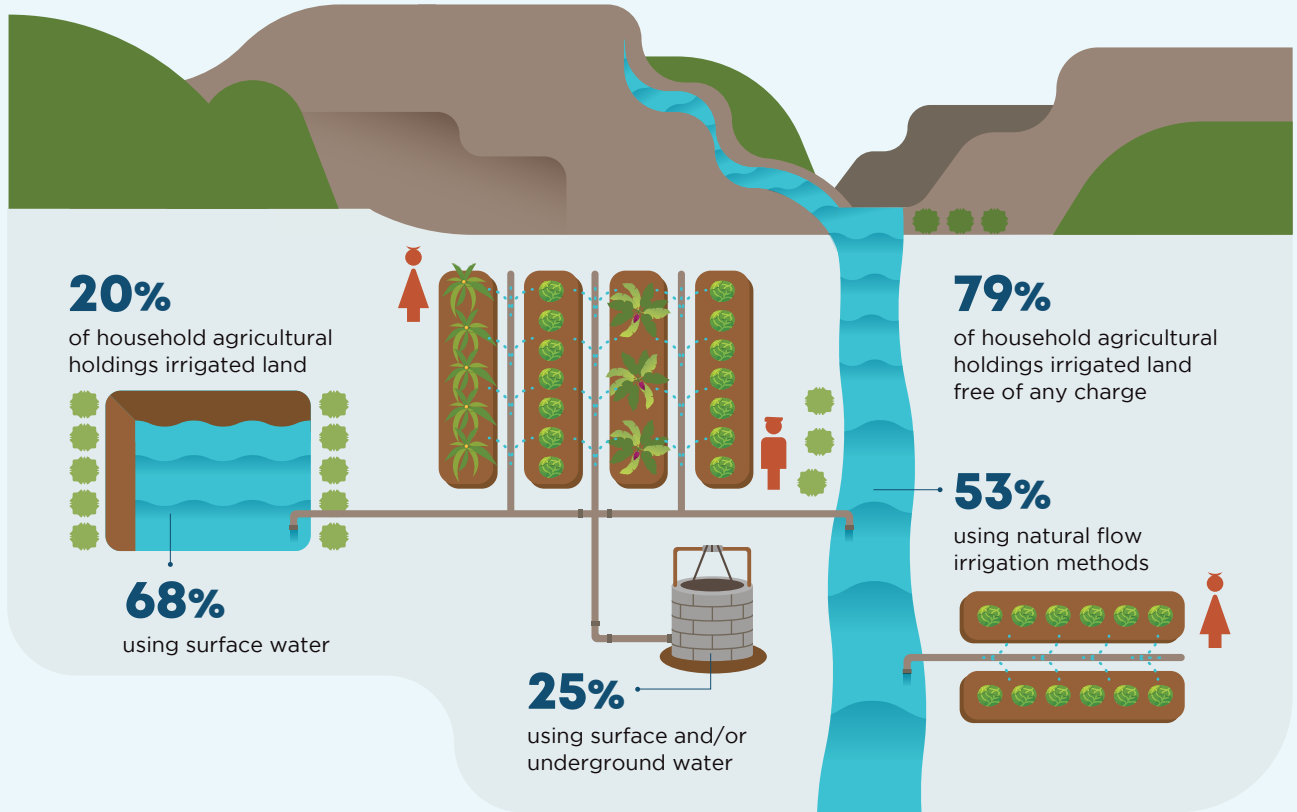


63%
of households tilled land with manual power

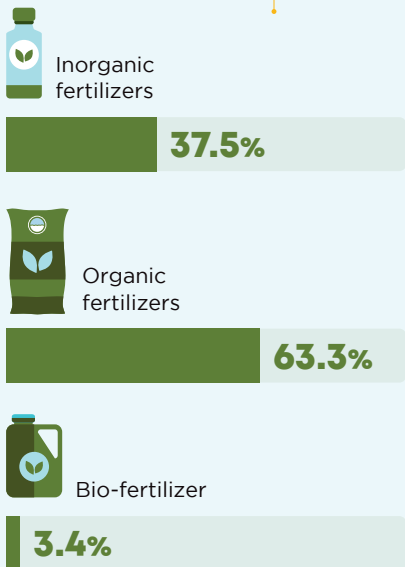
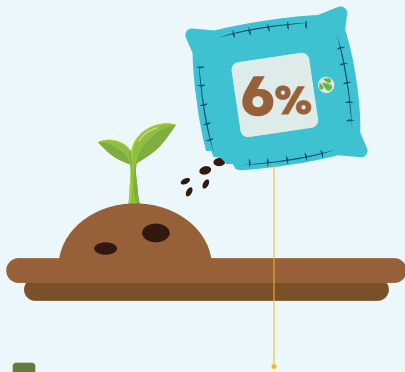


33%
of households tilled land with machine power

CROP CULTIVATION (CONTINUED)



Percentage of agricultural household holdings reported to use fertilizers



6% of households use some type of plant protection



91% of households use self-produced seeds/ planting materials

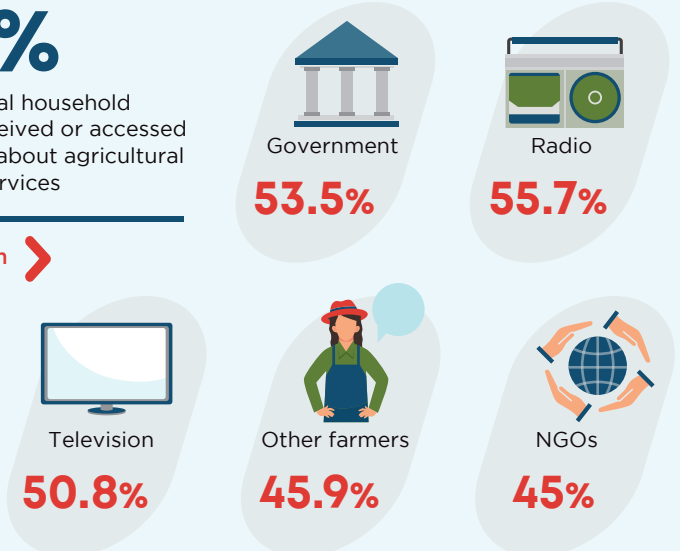


1% of households use government seeds/ planting materials

12%

of agricultural household holdings received or accessed information about agricultural extension services

of them from >

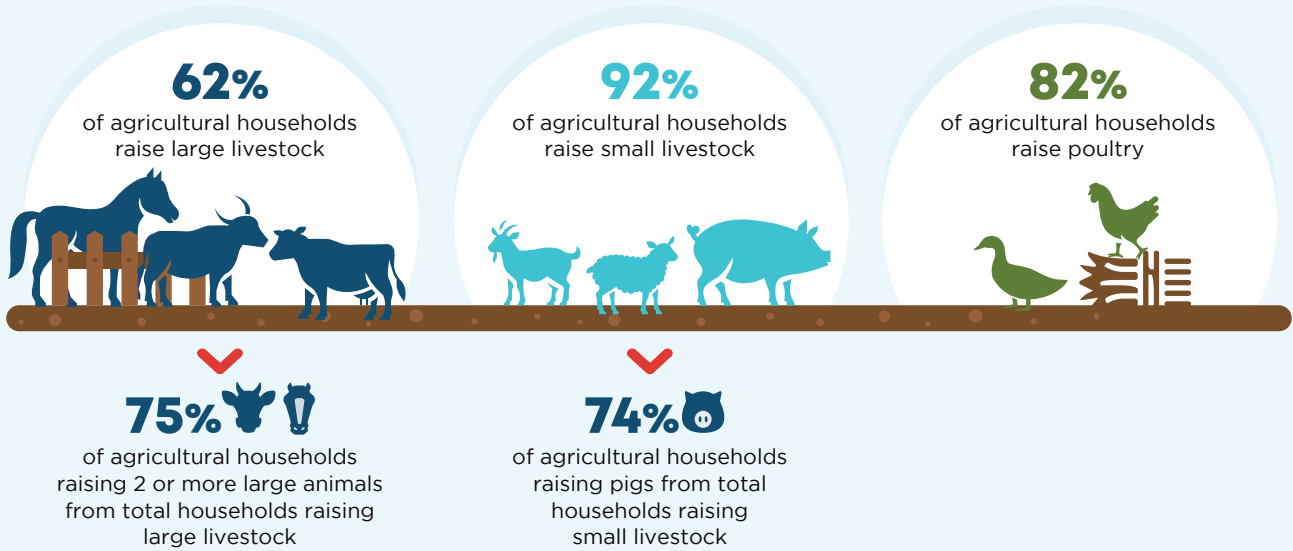


LIVESTOCK AND POULTRY REARING

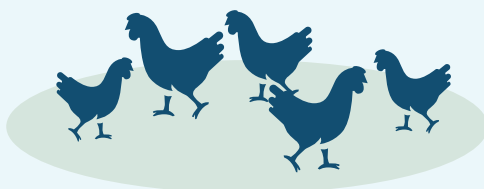
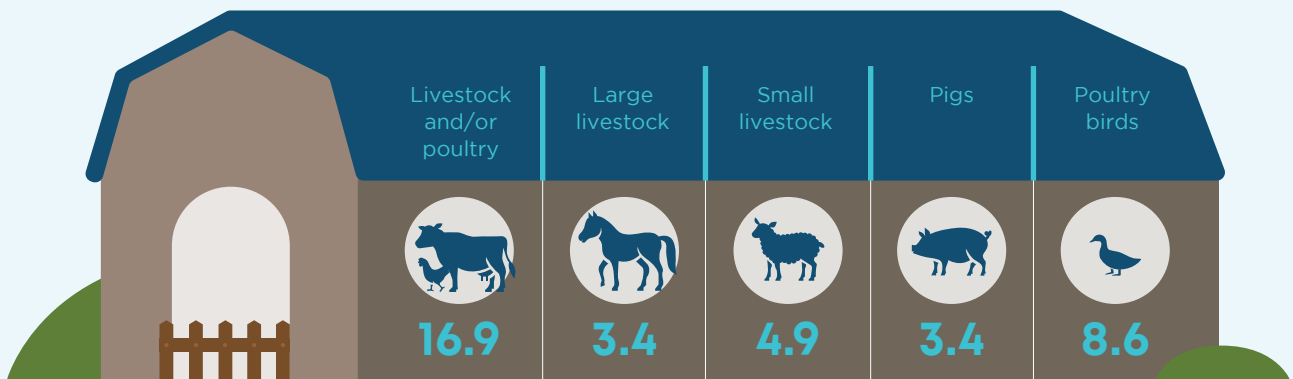


95% of agricultural households keeping or raising livestock and/or poultry to total number of agricultural households

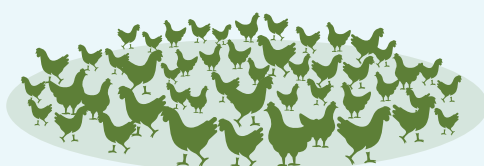
Among those households keeping or raising livestock:



Average number of livestock and poultry birds raised or kept per agricultural households keeping:



57%
of agricultural households rearing **fewer than 10 poultry birds**



2%
of agricultural households rearing **50 or more poultry birds**

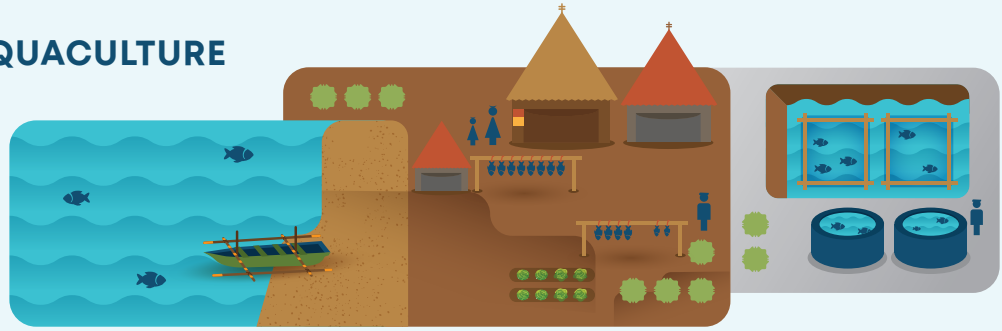


6%
of Agricultural Households report using veterinary services from total agricultural households keeping or raising poultry

FISHING AND AQUACULTURE

7 768

Households engaged in fishing and/or aquaculture



4 405

Households engaged in fishing from the agriculture households



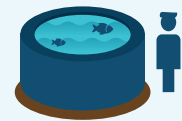
48%

of households engaged in fishing for few days to few weeks over the last 12 months



4 543

Households engaged in aquaculture from agriculture households



56%

of households engaged in aquaculture for few days to few weeks over the last 12 months

25%



of households did not use any vessel for fishing

60%



of households engaged in fishing for consumption

3 813

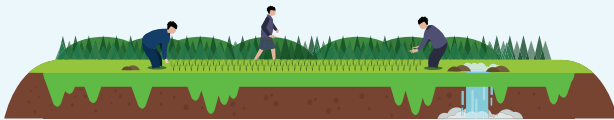


Households engaged in aquaculture

AGRICULTURAL HOUSEHOLDS AND POPULATION

764 216

Estimated population of households with agricultural holdings



Sex ratio (per 1 000) among population of households with agricultural holdings



5.4

Average size of an agriculture household

6%

of female heads to total female population



29%

of male heads to total male population

30%

of agricultural population aged 3 years or more who reported no schooling



33%
Female



28%
Male



20%

of population aged 3 years or more who completed education to secondary level and above

32%

of agricultural population aged 10 years or more who worked over the last 7 days



13%
Female



50%
Male